



LIGHT TRAP LTR

- ✓ Maximum light reduction
- ✓ Low air resistance
- ✓ Made entirely of plastic and stainless / galvanized steel
- ✓ Easy assembly
- ✓ Flexible dimensions

A good climate in your barn is the basis for healthy animals and optimal performance. An optimal lighting schedule, without external influences, is essential for the results in your barn. Ventilation openings often cause unwanted external light influences. With the Scan-Air light trap you have the right light trap for a trouble-free light control in your barn.

Due to the aerodynamic design of the light filter profiles, the air resistance is minimal, but they ensure maximum light reduction. The light traps can be made on each dimension, so for every application we can make a suitable light trap. To save up to 70% on transport volume, the filters can be supplied as an unassembled kit.

Scan-Air produces light traps for wall inlets, wall fans, and ventilation chimneys.



Light trap for wall inlet:

Type	Installation dimensions		
	W	H	D
LTR-2500	540	375	155
LTR-3500	640	425	155
LTR-5350	840	475	155
LTR-7500	1040	525	155
LTR-9000	1120	575	155

Dimensions custom made light traps:

Width:	200-2000mm (each step possible)
Height:	200-2000mm (each step possible)
Depth:	155mm

Light trap for wall fan:

Type	Installation dimensions		
	W	H	D
LTR-WV-92	1005	1005	155
LTR-WV-130	1382	1382	155
LTR-WV-140	1480	1480	155

Light trap for ventilation chimney:

Type
LTR-K-645
LTR-K-730
LTR-K-820
LTR-K-920



About Scan-Air

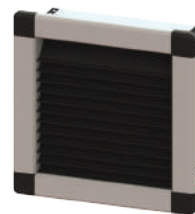
Scan-Air is a leading manufacturer in the field of ventilation, daylight, and pop-hole systems. For over 25 years we are producing high quality products with our advanced machinery and our dynamic organization.

Characteristic of Scan-Air's products is the use of a well thought-out building system, which enables us to offer a suitable solution for every application. The use of plastic and stainless steel materials guarantees a long lifetime.

Scan-Air offers a complete package of ventilation, daylight, and pop-hole solutions. With our knowledge and expertise in these fields, we can design the suitable total concept for your barn.

For more information, please contact us or our local dealer:

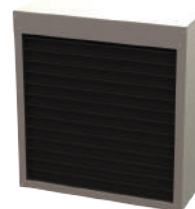
Options LTR



Plastic



Built-in



Sheet metal galvanized



Chimney with LTR