

Ceiling inlets

PVH

Ceiling Inlet Horizontal PVH



- ✓ Horizontal air control due to curved flap
- ✓ Optimal air control due to curved flap
- ✓ Self-opening
- ✓ Insulated flap

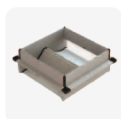
Suitable sectors



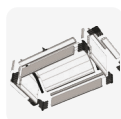
Options



Single



Double



Unassembled



Multiple



Ventilation chimney with PVH

Type	Installation dimensions (mm)			Net surface	Capacity (m ³ /hr)			Pull force	Stroke length
	W	H	L		10 Pa	20 Pa	30 Pa		
PVH-E-2400	320 mm	100 mm	600 mm	1456 cm ²	1750	2400	2750	1.5 kg	320 mm
PVH-E-3350	370 mm	100 mm	700 mm	2046 cm ²	2450	3350	3850	2 kg	370 mm
PVH-E-4500	420 mm	100 mm	800 mm	2736 cm ²	3250	4500	5150	2.5 kg	420 mm
PVH-D-4800	600 mm	100 mm	600 mm	2912 cm ²	3500	4800	5500	3 kg	320 mm
PVH-D-6750	700 mm	100 mm	700 mm	4092 cm ²	4900	6750	7750	4 kg	370 mm
PVH-D-9000	800 mm	100 mm	800 mm	5472 cm ²	6550	9000	10350	5 kg	420 mm

Available dimensions

Length	200-1120 mm	In steps of 1 mm
Width	320-800 mm	320/370/420/600/700/800 mm
Height	100-500 mm	In steps of 25 mm

