

WALL INLET UNIFLEX

- ✓ V-shape jet stream
- ✓ Independent air control
- ✓ Spoilers flexible adjustable
- ✓ Made entirely of plastic and stainless steel
- ✓ Easy assembly
- ✓ Flexible dimensions
- ✓ Modular system
- ✓ Insulated slide

A good climate in your barn is the basis for healthy animals and optimal performance. By far the most climate problems in the barn are caused by the inlet of the air. It is essential getting the fresh air well divided, with the right speed to your animals. This way you prevent draft and there is still sufficient ventilation. With the Scan-Air Uniflex you have the right inlet to perfectly control the air intake in your barn.

The Uniflex is self-opening, and is closed through a motor. The position of the spoilers hardly affects the inlet opening surface, because the spoilers are built in front of the slide. Especially in situations where air control is very important, we recommend to use the Uniflex. The adjustable spoilers control the air direction, so the air can be perfectly controlled in case of wide houses or obstacles like cages, laying nests or construction beams. To guarantee the air throw at minimum ventilation, the slide can be equipped with a V-shape, so the air is bundled and a jet stream is created. The Scan-Air Uniflex is made entirely of plastic and stainless steel, which guarantees a long lifetime. For every application we can make a suitable inlet.



Technical data Uniflex

Type flap	Installation dimensions			Net surface (cm ²)	Capacity (m ³ /hr)			Pull force (kg)	Stroke length (mm)
	W	H	D		10 Pa	20 Pa	30 Pa		
UF-2500	540	345	100	1525	1800	2500	2900	2	350
UF-3500	640	395	100	2130	2550	3500	4050	2,5	400
UF-5350	840	445	100	3240	3900	5350	6150	3,5	450
UF-7500	1040	495	100	4550	5450	7500	8650	4,5	500
UF-9000	1120	545	100	5454	6550	9000	10350	5	550

Dimensions custom-made inlets:

Width:	200-1120mm (each step possible)
Height:	245-670mm (in steps of 25 mm)
Depth:	0-500mm (in steps of 25 mm)

About Scan-Air

Scan-Air is a leading manufacturer in the field of ventilation, daylight and pop-hole systems. For over 25 years we are producing high quality products with our advanced machinery and our dynamic organization. Characteristic of Scan-Air's products is the use of a well thought-out building system, which enables us to offer a suitable solution for every application. The use of plastic and stainless steel materials guarantee a long lifetime.

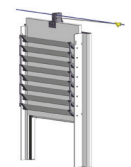
Scan-Air offers a complete package of ventilation, daylight and pop-hole solutions. With our knowledge and expertise in these fields, we can design the suitable total concept for your barn.

For more information, please contact us or our local dealer:

Options Uniflex



Jetstream slide



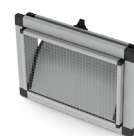
Delay slide



Multiple Uniflex



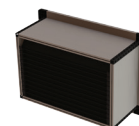
Transparent slide



Telescopic flange



Windbaffle



Light trap



Combi panel with windows