

WALL INLET GKK

- ✓ Perfect air guidance due to curved flap
- ✓ Made entirely of plastic and stainless steel
- ✓ Flexible dimensions
- ✓ Modular system
- ✓ Insulated flap
- ✓ Easy assembly

A good climate in your barn is the basis for healthy animals and optimal performance. By far the most climate problems in the barn are caused by the inlet of the air. It is essential getting the fresh air well divided, with the right speed to your animals. This way you prevent draft and there is still sufficient ventilation. With the Scan-Air curved double turning point flap you have the right inlet to perfectly control the air intake in your barn.

The wall inlet is self-opening, and is closed through a motor. Because the flap opens also at the bottom after 40%, during warm days the air is partly sent directly over the animals. The Scan-Air curved double turning point flap is made entirely of plastic and stainless steel, which guarantees a long lifetime. For every application we can make a suitable inlet. To save up to 70% on transport volume, the inlets can be supplied as a unassembled kit.



Technical data GKK

Type flap	Installation dimensions			Net surface (cm ²)	Capacity (m ³ /hr)			Pull force (kg)	Stroke length (mm)
	W	H	D		10 Pa	20 Pa	30 Pa		
GKK-2500	540	345	100	1525	1800	2500	2900	1,3	460
GKK-3500	640	395	100	2130	2550	3500	4050	1,5	520
GKK-5350	840	445	100	3240	3900	5350	6150	2	590
GKK-7500	1040	495	100	4550	5450	7500	8650	2,2	660
GKK-9000	1120	545	100	5454	6550	9000	10350	2,5	730

Dimensions custom-made inlets:

Width:	200-1120 mm (each step possible)
Height:	345 / 370 / 395 / 445 / 495 / 545
Depth:	100-500 mm (in steps of 25 mm)

About Scan-Air

Scan-Air is a leading manufacturer in the field of ventilation, daylight and pop-hole systems. For over 25 years we are producing high quality products with our advanced machinery and our dynamic organization. Characteristic of Scan-Air's products is the use of a well thought-out building system, which enables us to offer a suitable solution for every application. The use of plastic and stainless steel materials guarantee a long lifetime.

Scan-Air offers a complete package of ventilation, daylight and pop-hole solutions. With our knowledge and expertise in these fields, we can design the suitable total concept for your barn.

For more information, please contact us or our local dealer:

Options GKK



Transparent flap



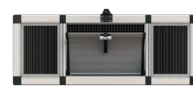
Windbaffle



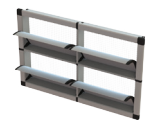
Telescopic flange



Light trap



Combi panel with windows



Multiple inlets with curved flaps



Unassembled



Spoiler 125 mm